

Logpoint BCS for SAP

Often called the digital heart of a business an SAP system is essential to business continuity. So, a breach of an SAP system can severely impact your daily operations, leading to financial losses, productivity deficiencies, and damage to your brand authority and consequently, customer trust.

Your SAP operations should be secured with a holistic security platform that covers all aspects of cybersecurity and is equipped with advanced detection, powerful analytics, and actionable intelligence. Detect threats early - before they impact your business and revenue.



/ A breach is detrimental to your business, reputation, and overall compliance

The average cost of an SAP security breach is

\$5 million per attack.*

Vulnerable SAP systems are an extremely attractive target for cybercriminals. Breaking into an SAP system, the attacker can bypass all access and authorization controls, gaining full control of the SAP system, its underlying business data, and processes. This can then result in malicious activities severely impacting business operations and causing unprecedented reputational damage.

As data stored in the SAP system is subjected to various industry, financial and governmental regulations, securing it against attacks is essential to meet compliance requirements.

Successful exploitation of a vulnerable SAP system could allow an attacker to perform several malicious activities, including:

- Steal Personally Identifiable and Personally Sensitive Information (PII and PSI) from employees, customers, and suppliers
- Read, modify, or delete financial records
- Change banking details (account number, IBAN number, etc.)
- Administer purchasing processes
- Disrupt critical business operations, such as supply chain management, by corrupting data, shutting processes down completely, or deploying ransomware
- Perform unrestricted actions through operating system command execution
- Delete or modify traces, logs, and other files
- Steal intellectual property and other confidential data stored in the SAP system

/ Improve your defense against threats with Logpoint BCS for SAP

Boost your resilience with holistic monitoring

Onboard your SAP data into a SIEM for better security robustness and improved threat detection. Our solution is agnostic and integrates with any SIEM.

With end-to-end visibility throughout your entire infrastructure, strengthen your monitoring capabilities and detect threats earlier and faster – way before they impact your business.

Go from visibility to action – all in one platform

Get real-time monitoring, powerful analytics, and automated incident response in a unified security operations platform. Monitor, analyze, and act based on a single source of truth. All of this helps reduce MTTR (Mean Time to Restore) because you can respond to threats more effectively in an integrated security platform as well as

boosting your operational efficiency to successfully mitigate risk and combat threats.

Easily navigate and utilize your data

Get a complete overview of your SAP's security exposure with pre-built dashboards and customizable visualizations. Harness the data at your disposal and drill down to retrieve greater context and granular information on specific events. Use multiple filtering options and search templates to easily navigate data. Act faster, with greater efficiency, and improve performance with actionable intelligence.

To improve protection of your SAP operations, we are introducing **four distinct solutions**.

Now you can tailor and adjust your security coverage to match your exact needs.

Boost your SAP security and effectively respond to threats with Security & Audit Compliance Monitoring

Did you know that **64% of the SAP systems have been breached** during the past 24 months?*

As it stands, SAP security is disconnected from the central security strategy hampering the ability to sufficiently monitor, patch and spot malicious activity. A security gap like this leaves businesses and organizations more exposed and subsequently vulnerable to attacks.

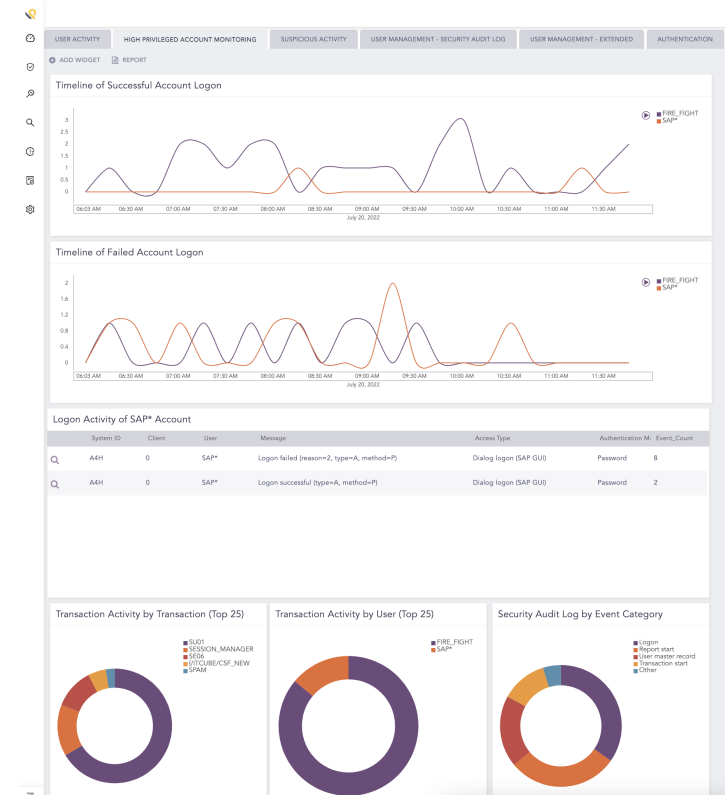
Elevate your SAP security to the next level

Strengthen your threat visibility and combat incidents more successfully with holistic end-to-end security operations capabilities. Let us bridge your security gap by onboarding your SAP into SIEM.

Advanced security insights across your entire infrastructure, enable you to identify threats earlier and respond faster – before they impact your business, compliance, and reputation.

Save time with automation

With pre-defined use cases- ready-to-use alerts, and checks, we automate your SAP security and compliance monitoring. Save time and effectively identify, mitigate, and manage threats.



Identify advanced attacks early and defend efficiently against fraud with Business Integrity Monitoring

Insider threat incidents have risen by 44% over the past two years, costing \$15.38 million per incident.*

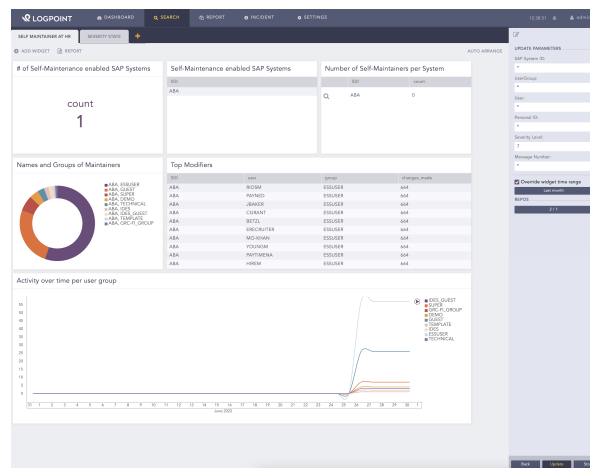
Reduce fraud-induced losses with improved detection of anomalies in business standards. We help you uncover potential fraud patterns, so you can take the necessary steps to mitigate risks of fraud.

Easier and cheaper management of errors and fraud

Insider threats are among the most common causes of data breaches worldwide. Coming from inside the organization, detection can be difficult. With pre-defined use cases and behavioral analytics, we identify deviations in your SAP business processes, so you quickly can put an end to employee theft, corruption, incorrect transactions, or warranty fraud.

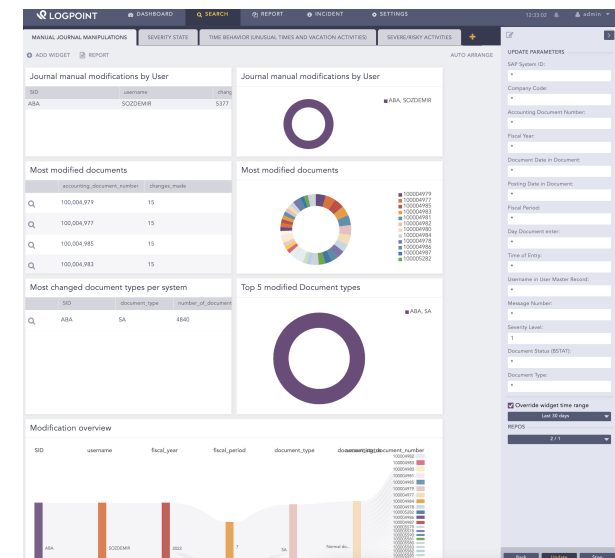
Simple and inexpensive implementation

Get full functionality with minimal configuration efforts. No need to spend time and funds on implementation, when you can have an out-of-the-box solution that works in an instant.



Analysis at business run time

React quickly to mitigate risks effectively. Spot fraudulent activity immediately with monitoring and automated controls, at the speed of the business.



Strengthen your compliance with full control of your sensitive data with Personal Identifiable Information (PII) Access Monitoring

Can you afford to lose control of your sensitive assets?

Personal Identifiable Information and corporate data are protected by regulatory standards.

The inability to comply with regulation imposes sanctions and hefty penalties. For example, in the case of GDPR, entities can be fined up to **4% of their annual turnover.*** And if third-party data is compromised, the **Copyright Act expressly provides cause for potentially massive claims for imposed damages.***

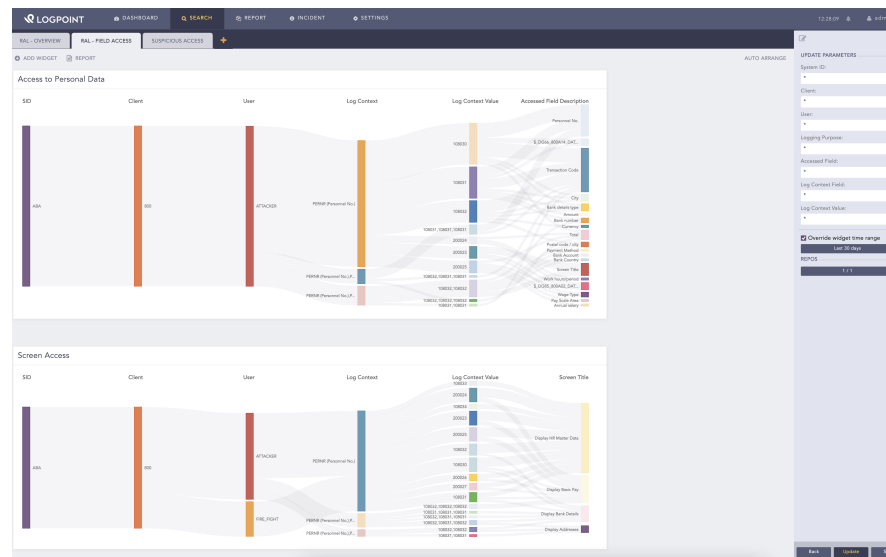
To protect this data, organizations need to understand where it resides, who has access to it, and how to monitor what is happening to it.

Meet compliance regulations

Automatically configure and extract SAP Read Access Log into SIEM for comprehensive security of your sensitive data. Monitor user authorizations in your SAP systems to detect access to critical transactions, disclosed corporate information, and personal data. Secure your sensitive data with a powerful and centralized logging solution.

Centralize the monitoring of PII and PSI into one platform

Instead of monitoring system by system, BCS for SAP enables all monitoring on a central platform. Manage access violations quickly and more effectively with a comprehensive, all-in-one overview.



Secure smooth operations and reduce the risks of costly outages with IT Service Intelligence

Outages are expensive – 1 in 3 cost over \$1 million. Yet, during the past three years, 75% of all businesses have suffered from an outage.*

Our IT-SI solution helps organizations identify an operations problem very quickly – before it impacts their revenue, customers, or internal teams.

Full-stack monitoring of your operational capabilities

Why operate in the dark and waste time searching for issues that impede your operational capabilities, when you can get full visibility with a click of a finger?

Monitor the application, integration, and technical layer to effectively detect the root causes and quickly respond to issues threatening the stability of your SAP system. Ensure smooth operations, eliminate downtime, and avoid costly outages with complete insight into your landscape.

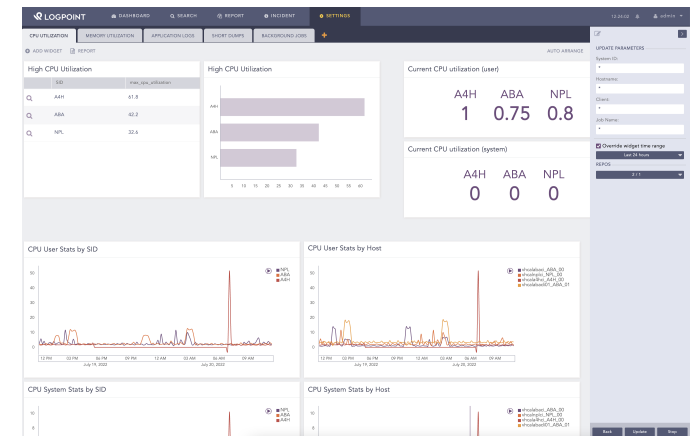
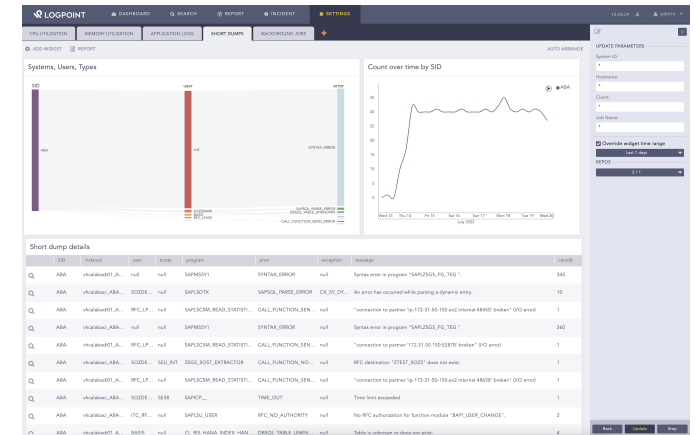
Combat degradations successfully with unified infrastructure monitoring

Work smarter, not harder. Through pre-configured KPIs, we help you monitor what matters the most. To increase efficiency, we cluster alerts into larger events and remove the unnecessary noise to help shorten your MTTR.

Effectively identify the root causes instigating service degradations and pinpoint areas of impact to make operations run more efficiently.

Act proactively with an early warning system and trend analysis

Detect future service degradations in advance based on historic data and trend analysis. Be proactive and circumvent incidents before they even happen with our early-warning system.



About Logpoint

Logpoint is the creator of a reliable, innovative cybersecurity operations platform – empowering organizations worldwide to thrive in a world of evolving threats.

By combining sophisticated technology and a profound understanding of customer challenges, Logpoint bolsters security teams' capabilities while helping them combat current and future threats.

Logpoint offers SIEM, UEBA, and SOAR technologies in a complete platform that efficiently detects threats, minimizes false positives, autonomously prioritizes risks, responds to incidents, and much more.


Headquartered in Copenhagen, Denmark, with offices around the world, Logpoint is a multinational, multicultural, and inclusive company.



Trusted by more than 1,000 enterprises

 KONICA MINOLTA CAPTIVATE

 **BOEING**

 GOSECURE RÉMY COINTREAU

Awards and honors



Gartner Peer Insights

Gartner

Gartner
Magic
Quadrant



For more information visit www.logpoint.com